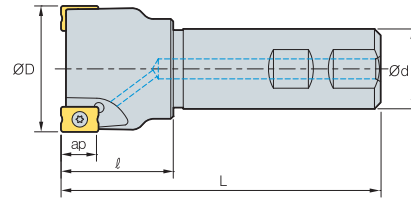


RM4PS4000



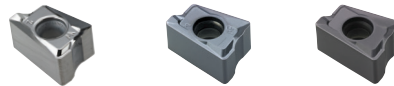
AA
90°
• AR: -6°
• RR: -24°~ -14°

(mm)

Designation		ØD	Ød	ℓ	L	ap	
RM4PS 4032HR-S32	2	32	32	40	125	14	0.68
4032HR-S32M	3	32	32	40	125	14	0.69
4040HR-S32	3	40	32	42	125	14	0.83
4040HR-S32M	4	40	32	42	125	14	0.83
4040HR-S40	3	40	40	42	125	14	1.14
4040HR-S42	3	40	42	42	125	14	1.23
4050HR-S32	3	50	32	45	125	14	1.02
4050HR-S32M	4	50	32	45	125	14	1.02
4050HR-S40	3	50	40	45	125	14	1.35
4050HR-S40M	4	50	40	45	125	14	1.34
4050HR-S42	3	50	42	45	125	14	1.45
4050HR-S42M	4	50	42	45	125	14	1.45
4063HR-S32	4	63	32	45	125	14	1.25
4063HR-S32M	6	63	32	45	125	14	1.24
4063HR-S40	4	63	40	45	125	14	1.62
4063HR-S40M	6	63	40	45	125	14	1.61
4063HR-S42	4	63	42	45	125	14	1.71
4063HR-S42M	6	63	42	45	125	14	1.7

Available inserts

LNEX-MA LNM(E)X-MF LNM(E)X-MM



Designation	Cermet		Coated											Uncoated			page	
	CN2000	CN30	NCM325	NC5330	NCM535	NCM545	PC2505	PC2010	PC3600	PC3700	PC6510	PC9530	PC9540	PC5300	PC5400	ST30A		G10
LNEX 151004PNR-MF											●			●	●			
151004PNR-MM											●			●	●			
151004PNR-MA																		●
151008PNR-MF											●			●	●			
151008PNR-MM										●	●			●	●			
151008PNR-MA																		●
151016PNR-MF											●			●	●			
151016PNR-MM											●			●	●			
LNMX 151004PNR-MF									●	●	●			●	●			
151004PNR-MM									●	●	●			●	●			
151008PNR-MF					●				●	●	●			●	●			
151008PNR-MM					●				●	●	●			●	●			
151016PNR-MF									●	●	●	●		●	●			
151016PNR-MM									●	●	●			●	●			

Parts

Specification		
Ø32~Ø63	FTKA0412B	TW15S

Available inserts E11

